

CFC

# CLEAN FRONT CARRIER



- Accepts GH concealable panels
- Clean design with plate and external pockets
- Center chest pocket and two large side-accessible pockets with zipper closures
- Durable, high-quality nylon Cordura outer material
- Front and rear top-loading plate pockets accept 5x8", 7x9", 8x10", and 10x12" special threat and hard armor plates (size restrictions apply)
- Overlapping shoulder and back-to-front side closures utilizing durable high-profile hook and loop
- Front and rear 3x10" loop for ID attachment (3x9" loop for female) (IDs sold separately)
- Mic tabs at shoulders and center chest
- Internal cummerbund for secure fit
- Easy and secure body-side panel access
- Ballistic suspension for proper panel alignment prevents sagging and curling

## FEATURES



BACK



SIDE



CENTER MIC TAB



ZIPPERED POCKETS

## COLORS



BLACK



DARK NAVY



RANGER GREEN



COYOTE



WOLF GREY

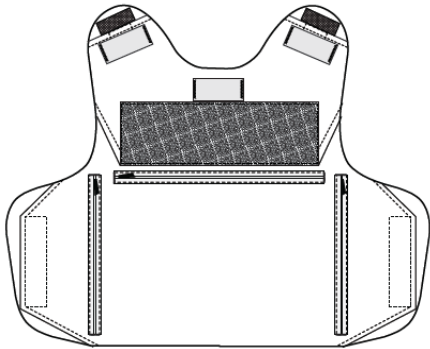


TAN 499

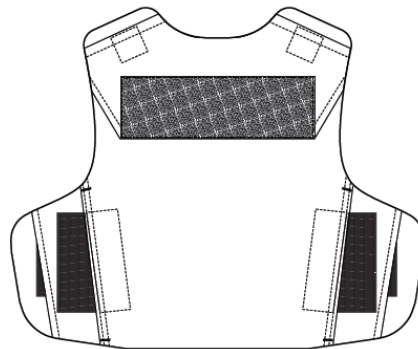


TACTICAL GREEN

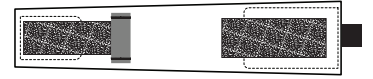
## PRODUCT COMPONENTS



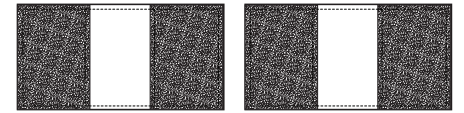
CARRIER FRONT



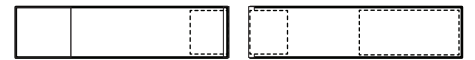
CARRIER BACK



SHOULDER STRAPS



SIDE CLOSURE STRAPS



BELLYBANDS

## COLORWAYS

Carrier	Black	Dark Navy	Ranger Green	Coyote	Wolf Grey	Tan 499	Tactical Green
Trim	Black	Black	Ranger Green	Coyote	Wolf Grey	Tan 499	Tactical Green
Swatch							

## PLATE POCKET RESTRICTIONS

Key: 5x7", 5x8", 7x9"  
 5x7", 5x8", 7x9", 8x10"

5x7", 5x8", 7x9", 8x10", 10x12"

Front *Applicable to Male Sizes										
Girth	16	18	20	22	24	26	28	30	32	34
Length	10	10	10	10	11	11	11	11	12	12
	11	11	11	11	12	12	12	12	13	13
	12	12	12	12	13	13	13	13	14	14
	13	13	13	13	14	14	14	14	15	15
	14	14	14	14	15	15	15	15	16	19
	15	15	15	15	16	16	16	16	17	17
	16	16	16	16	17	17	17	17	18	18
	17	17	17	17	18	18	18	18	19	19

Back *Applicable to Male Sizes										
Girth	16	18	20	22	24	26	28	30	32	34
Length	12	12	12	12	13	13	13	13	14	14
	13	13	13	13	14	14	14	14	15	15
	14	14	14	14	15	15	15	15	16	16
	15	15	15	15	16	16	16	16	17	17
	16	16	16	16	17	17	17	17	18	18
	17	17	17	17	18	18	18	18	19	19
	18	18	18	18	19	19	19	19	20	20
	19	19	19	19	20	20	20	20	21	21